



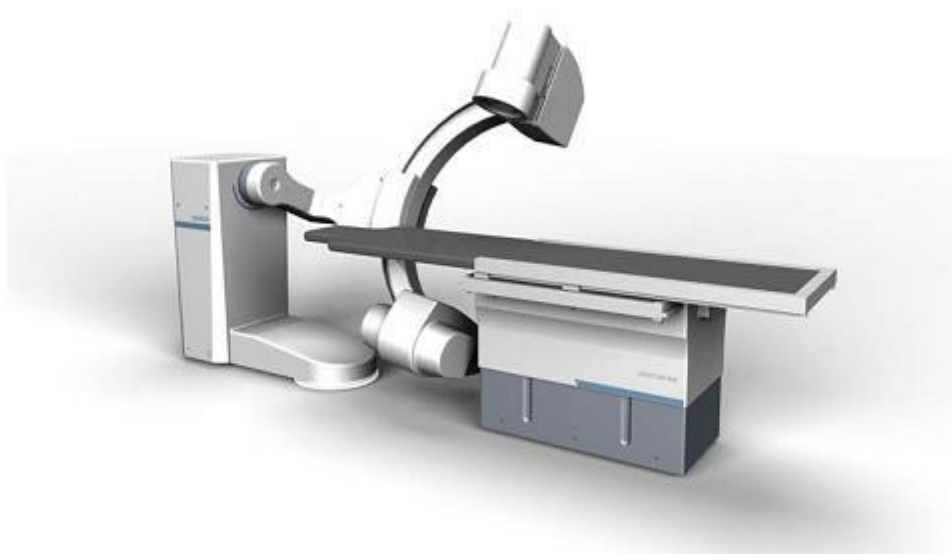
## Features:

- Specially designed for Cardiac, Peripheral and Neurological studies
- Exceptional performance in Digital Mode- Maximum quality in Angiography and embolizations
- No artifacts in Road-mapping due fluoro lock-in and EIP feature
- High Frequency X-Ray Generator. Pulsed Fluoro and low dose rates
- Iso-Watt operation – best image contrast
- System totally controlled by microprocessors generating constant kilowatt x-ray beam
- Homogeneous images in every projection
- Kvp, mA and Pulse Width can be used in auto, manual or both modes
- Complete system monitoring in each shot - Safe and efficient for operators and patients
- Overload X-Ray tube protection
- Error codes to facilitate servicing. Fast maintenance

|  |
|--|
| X-Ray generator  |
| Output Power: 75 KW  |
| 440 VAC – three phase;<br>Power supply: (-10% / +20%);<br>Circuit Breaker 150 A; |
| Ripple: < 1%;  |

|  |
|--|
| Linearity: <0.02;  |
| Cine Mode<br>mA: 25 to 1000 mA;<br>Pulse Width: 2ms to 10ms;<br>ABS: Auto Kilowatt;<br>Frame Speed; 15 to 30 frames/sec;                         |
| Fluoro Mode<br>mA: 15 to 50 mA;<br>Pulse Width: 2ms to 4ms;<br>KVp: 1 KVp steps – ABS or manual;<br>Pulse Frequency: Line or CCD synchronization |

## Mechanics



## C-Arc

- C-Arc fixed on the floor. Totally motorized with all four movements and variable SID.
- Rotation and Angle
- Both sides patient table access by the Physician.

Soma Tech Pvt. Ltd.  
E-114 GIDC - Savli Manjusar Savli Road  
Vadodara, Gujarat, India



Note: The technical data given in this publication is for general information and are subject to change without notice. Actual configuration on the unit may vary. Contact our sales representatives for a complete list of details.

|  |
|--|
| Arc Movements                            |
| Crane-Caudal: 60;<br>Caudal-Cranial: 45; |
| Orbital rotation: 180 in 20 seconds;     |
| SID: between 900 and 1150 mm             |

## Patient Table

- Carbon fiber table top, floor mounted.
- Table comes with two holders: Arm Holder and Serum Holder
- Ceiling suspended shaft for monitors.

|                                    |
|------------------------------------|
| Patient Table Movements            |
| Longitudinal movement: 1260 mm;    |
| Lateral movement: 270 (+/-125 mm); |
| Height: 850 a 1150 mm              |

Table comes with two holders: Arm Holder and Serum Holder  
Ceiling suspended shaft for monitors.



Soma Tech Pvt. Ltd.  
E-114 GIDC - Savli Manjusar Savli Road  
Vadodara, Gujarat, India



Note: The technical data given in this publication is for general information and are subject to change without notice. Actual configuration on the unit may vary. Contact our sales representatives for a complete list of details.

## EXAM ROOM – EQUIPMENTS



### Image Intensifier:

Three fields Image Intensifier (9", 6" and 4.5" – 12", 9" and 6" optional) with QX tube and solid state power supply. High performance, high brightness and contrast, more reliable;

German Rodenstock HL lens with photo diode pick-up assembled in the lens structure

Carbon grid with 100 lines, specially designed for variable SID keeping uniform the radiological density

### CCD – Digital and Progressive Camera



CCD Progressive Digital Camera - high resolution at 1024x1024x12 bits

Individual set-up modes for each kind of procedure Fluoro, Cine or DSA

CCD – Digital and Progressive Camera

### Exam Room Monitors



2 x19" flat screen;

Endovue PPT – Picture-Perfect-Technology, ILR – Image-Lag-Reduction.

Soma Tech Pvt. Ltd.  
E-114 GIDC - Savli Manjusar Savli Road  
Vadodara, Gujarat, India



Note: The technical data given in this publication is for general information and are subject to change without notice. Actual configuration on the unit may vary. Contact our sales representatives for a complete list of details.

## X-Ray Tube



Metallic center X-Ray tube, focus 0.6 x 1.2 mm, heat storage 1.000.000 H.U.  
High Speed anode at 10.000 rpm  
Closed circuit oil refrigerating oil. Heat dissipation capacity 270.000 H.U./min

## Others

Automatic Collimator with Rotational Wedge Filer

1 Pair of High Voltages cables

1 System interconnection cables kit

1 Metallic Cabinet (Rack) for equipments;

1 Technical and User Manuals.

## IMAGE PROCESSOR AND REVIEW STATION

DIGISTAR 600® cathlab comes with two stations: Image Processor (Work Station) and a Review Station. Both stations are redundant allowing data safety against information lost.

### Image Processor – Workstation



Digital imaging processor and operational system tools.

It comes with two SATA hard disks in RAID mode at 1024x1024x12 bits resolution either in CINE or DSA, mode.

Soma Tech Pvt. Ltd.  
E-114 GIDC - Savli Manjusar Savli Road  
Vadodara, Gujarat, India



Note: The technical data given in this publication is for general information and are subject to change without notice. Actual configuration on the unit may vary. Contact our sales representatives for a complete list of details.

|  |
|--|
| Image Processor Hardware               |
| Pentium 4 – intel: 1 unit;             |
| Hard Disks 250GB: 2 units;             |
| DDR SDRAM NON ECC: 2 GB;               |
| Monitor 17" Touch Screen: 2 units;     |
| I/O interface Generator board: 1 unit; |
| Camera interface board: 1 unit;        |
| Digital Video Grabber board: 1 unit;   |
| UPS 1.2 KVA: 1 unit                    |

## REVIEW STATION



Station for Exam reviewing .  
 Server for IMAGE WATCHER® computers in the Hospital.  
 Medical Report editing  
 It comes with two SATA Hard Disks in RAID 1 mode.  
 Complete data safety system  
 High data storage capacity – by 300 cardio exams or 1000 DSA exams;

|                                    |
|------------------------------------|
| Review Station Hardware            |
| Pentium 4 – intel: 1 unit;         |
| Hard Disks 250GB: 2 units;         |
| DDR SDRAM NON ECC: 1 GB;           |
| Monitor 17" Touch Screen: 1 units; |
| Board RAID: 1 unit;                |
| CD/DVD Recorder : 1 unit;          |

Soma Tech Pvt. Ltd.  
 E-114 GIDC - Savli Manjusar Savli Road  
 Vadodara, Gujarat, India



Note: The technical data given in this publication is for general information and are subject to change without notice. Actual configuration on the unit may vary. Contact our sales representatives for a complete list of details.

|                          |
|--------------------------|
| Ink Jet Printer: 1 unit; |
| UPS 1.2 KVA: 1 unit      |
| Cabinet 19" : 1 unit;    |



SISMED / LTI has the most advanced software lab in the market specialized in digital medical systems for diagnosis purposes.

The DIGISTAR 600® Software is the most powerful and complete tool in the market for cardiac, vascular and neurological studies with features not seen in similar products.

SISMED® / LTI® is the only open-mind company accepting suggestions from our customers targeting the best tool for the Physician

All new software upgrades for that version are free.

### **Digital System IMAGE STAR ®**

- Image grabbing system with the following characteristics:
- Dynamic Image capturing in cine mode acquisition at 15 or 30 frames/sec.
- Real time subtraction in DSA mode;
- Road mapping at 1024x1024x12 resolution;
- Auto-loop either in cine or fluoro mode;
- Last Image Hold;
- Reference images for Angioplasty
- Simultaneous two cines exhibition for results comparison;

Soma Tech Pvt. Ltd.  
E-114 GIDC - Savli Manjusar Savli Road  
Vadodara, Gujarat, India



Note: The technical data given in this publication is for general information and are subject to change without notice. Actual configuration on the unit may vary. Contact our sales representatives for a complete list of details.

- Real time brightness and Contrast adjust;
- DSA at 1, 3, 5 or 10 frames/sec in real time;
- Log filters “LogLUT” for best subtraction acquisition;
- Real time edge enhancement;

## **PACS System G2® - DICOM 3.0**

Register list, managing, medical reports, edition, printing, medical reports archiving and digital multi-media with the following features:

- Immediate Exam and Medical Report delivery in the same CD.
- The CD runs (auto run) in every Windows operational system.
- Export and Import DICOM 3.0 exams
- Complete tools for Scientific presentation exporting images in all BMP, JPEG, MPEG and AVI formats
- Internet Medical Report transmission
- Exam recorded in CD or DVD with all injections, single images, medical report and all tools existing at the workstation
- Logo and Hospital Header on the Medical report

## **Image Analyzer**

**Viewing system with several specific filters for the best diagnosis results**

|   |
|---|
| <b>Image Analyzer</b>                         |
| QCA   |
| Ejection Fraction (LV);                       |
| Brightness & Contrast;                        |
| Edge Enhancement;                             |
| Colorization;                                 |
| Emboss;                                       |
| Texts, Arrows, polygons and image schematics; |
| Special Pan Lenses;                           |
| Black / White;                                |
| Equalization – Histogram;                     |
| Image integration in only one frame;          |

Soma Tech Pvt. Ltd.  
E-114 GIDC - Savli Manjusar Savli Road  
Vadodara, Gujarat, India



Note: The technical data given in this publication is for general information and are subject to change without notice. Actual configuration on the unit may vary. Contact our sales representatives for a complete list of details.



|  |
|--|
| Sequential Play mode;                            |
| Injection re-recording with filters;             |
| Injection selection to be recorded on CD or DVD; |
| Cine Export in MPEG/AVI and images in BMP/JPG    |

## Medical Report Edition

Easy to use, a powerful tool to write the medical reports.

Each Physician may personalize his own medical report format.

Printed Medical Report has the same resolution you see at the monitor screen (WYSIWYG: what you see is what you get).

|  |
|--|
| Medical Report Editor  |
| Texts and images auto-positioned in the report;  |
| Posters and films printing;  |
| Auto selected and processed images positioning in the report;  |
| Header is auto in all reports;   |
| Hospital logo and colored texts in the Header;   |
| All fields (Patient's name, Physician, etc.) can be configured by the user to be shown in the report |
| Physician's name is auto in the report footer;   |

## G2® MANAGING TOOLS

Telemedicine interface (optional).

Statistics: Number of exams and Type of exams for a user selected period

Complete statement of all procedures done in a user-selected period.

Tendency Graphics

Soma Tech Pvt. Ltd.  
E-114 GIDC - Savli Manjusar Savli Road  
Vadodara, Gujarat, India



Note: The technical data given in this publication is for general information and are subject to change without notice. Actual configuration on the unit may vary. Contact our sales representatives for a complete list of details.